

# Portsmouth - A City Of Biodiversity

Flood defence schemes protect homes and people.  
In Portsmouth they also incorporate ground-breaking solutions that support the environment and benefit the local community.



Coastal  
Partners



Portsmouth  
CITY COUNCIL



# Ecoformliner

Textured 'Ecoformliner' sea walls create opportunities for marine animals and plants to flourish.



## Saltmarsh

Saltmarsh restoration in Tipner Lake using innovative 'BESE' grids.





## Tidal Pools

'Tidal pools' have enabled flora and fauna to colonise on what would otherwise be an ecologically barren structure.



## Wildflowers and Trees

Planting native trees and wildflowers have created wildlife corridors in an urban environment.





# Birds and Bees

To support endangered birds whilst adapting to climate change, we are developing designs for a bird island within Langstone Harbour as part of our North Portsea Island Coastal defence works.

Bee posts are being integrated into the landscape to further enhance the natural environment.

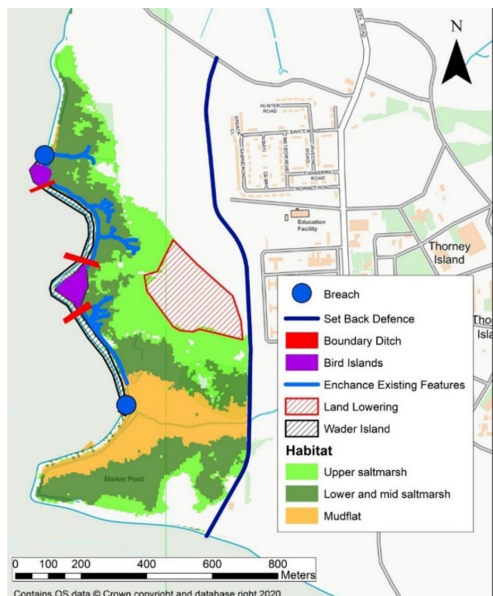




# Environmental Initiatives Solent Wide

Coastal Partners are co-ordinating a Regional Habitat Compensation Programme alongside the Environment Agency to create new intertidal habitats.

Across the region 17 potential sites have been identified



Marker Point, Thorney Island



Hurst Spit to Lymington, New Forest



Hook Lake, Warsash



Southmoor, Havant

The creation of saltmarsh usually leads to the loss of coastal grazing marsh. Therefore, we also need to find additional coastal grazing marsh as a result.

SMP Habitat Group	Cumulative Habitat Balance (Ha)		
	Epoch 1 (2005 - 2025)	Epoch 2 (2026 - 2055)	Epoch 3 (2056 - 2105)
Intertidal Mudflats	43	75	-32
Saltmarsh	-20	-208	-392
Coastal Grazing Marsh	69	69	69
Freshwater Habitats	17	17	17
Saline Lagoons	0	0	0



# A Collaborative Environmental Approach

<b>STACK BENEFITS</b>	<b>BLEND FUNDING</b>
Create new intertidal habitats	To deliver RHCP* targets
Reduce disturbance to birds	Bird Aware Solent initiatives
Deliver nitrate mitigation schemes	PfSH* nutrient neutrality
Improve water quality	Working with infrastructure
Carbon sequestration	Through carbon codes
Other environmental enhancements	Through FCERM* delivery & wildlife groups

\*RHCP – Regional Habitat Compensation Programme / PfSH – Partnership for South Hampshire / FCERM – Flood and Coastal Erosion Risk Management

**Together, we can deliver something greater than the sum of its parts**

